

20190321424

MONTICELLO AGR - PUD PLAT TWO

BEING A REPLAT OF ALL OF TRACT E, MONTICELLO AGR - PUD PLAT ONE, AS RECORDED IN PLAT BOOK 128, PAGES 122 THROUGH 124, PUBLIC RECORDS, PALM BEACH COUNTY, FLORIDA, LYING IN SECTION 6, TOWNSHIP 46 SOUTH, RANGE 42 EAST, PALM BEACH COUNTY, FLORIDA

SHEET 1 OF 3

47

STATE OF FLORIDA
COUNTY OF PALM BEACH

THIS PLAT WAS FILED FOR RECORD AT 11:17 AM THIS 29 DAY OF August 2019 AND DULY RECORDED IN PLAT BOOK NO. 129 ON PAGE(S) 47-49 SHARON R. BOCK, CLERK & COMPTROLLER



DEDICATION AND RESERVATIONS:

KNOW ALL MEN BY THESE PRESENTS THAT BOYNTON BEACH ASSOCIATES XXVI, L.L.P., A FLORIDA LIMITED LIABILITY LIMITED PARTNERSHIP, OWNER OF THE LAND SHOWN HEREON AS "MONTICELLO AGR - PUD PLAT TWO", BEING A REPLAT OF ALL OF TRACT E, MONTICELLO AGR - PUD PLAT ONE, AS RECORDED IN PLAT BOOK 128, PAGES 122 THROUGH 124, PUBLIC RECORDS, PALM BEACH COUNTY, FLORIDA, LYING IN SECTION 6, TOWNSHIP 46 SOUTH, RANGE 42 EAST, PALM BEACH COUNTY, FLORIDA BEING MORE PARTICULARLY DESCRIBED AS FOLLOWS:

BEING ALL OF TRACT E, MONTICELLO AGR - PUD PLAT ONE, AS RECORDED IN PLAT BOOK 128, PAGES 122 THROUGH 124, PUBLIC RECORDS, PALM BEACH COUNTY, FLORIDA.

CONTAINING 5.472 ACRES, MORE OR LESS.

ALL OF THE ABOVE SAID LANDS SITUATE, LYING AND BEING IN PALM BEACH COUNTY, FLORIDA, HAVE CAUSED THE SAME TO BE SURVEYED AND PLATTED AS SHOWN HEREON AND DO HEREBY DEDICATE AS FOLLOWS:

- TRACT "A", AS SHOWN HEREON, IS HEREBY RESERVED FOR VALENCIA SOUND HOMEOWNERS ASSOCIATION, INC., ITS SUCCESSORS AND ASSIGNS, FOR PRIVATE STREET PURPOSES AND OTHER PURPOSES NOT INCONSISTENT WITH THIS RESERVATION AND IS THE PERPETUAL MAINTENANCE OBLIGATION OF SAID ASSOCIATION, ITS SUCCESSORS AND ASSIGNS, WITHOUT RECOURSE TO PALM BEACH COUNTY.
- MAINTENANCE AND ROOF OVERHANG EASEMENTS ARE HEREBY RESERVED IN PERPETUITY TO THE OWNER OF THE LOT ABUTTING THE EASEMENT AND VALENCIA SOUND HOMEOWNERS ASSOCIATION, INC., ITS SUCCESSORS AND ASSIGNS FOR THE PURPOSE OF ACCESS TO AND MAINTENANCE OF IMPROVEMENTS, THE ROOF OVERHANG, EAVE GUTTERS, DRAINAGE AND UTILITY SERVICES, DECORATIVE ARCHITECTURAL TREATMENT, AND IMPACT SHUTTERS, WITHIN AND ADJACENT TO SAID EASEMENT WITHOUT RECOURSE TO PALM BEACH COUNTY.
- THE UTILITY EASEMENTS RUNNING ADJACENT AND PARALLEL TO THE TRACTS FOR PRIVATE ROAD PURPOSES, AS SHOWN HEREON, ARE NON-EXCLUSIVE EASEMENTS AND ARE HEREBY DEDICATED IN PERPETUITY TO THE PUBLIC FOR THE INSTALLATION, OPERATION, MAINTENANCE, REPAIR, EXPANSION AND REPLACEMENT OF UTILITIES, BOTH PUBLIC AND PRIVATE, INCLUDING, BUT NOT LIMITED TO, POTABLE WATER PIPELINES, RAW WATER PIPELINES, WASTEWATER PIPELINES, RECLAIMED WATER PIPELINES, ELECTRIC POWER LINES, TELECOMMUNICATION LINES, CABLE TELEVISION LINES, GAS LINES, AND RELATED APPURTENANCES. THE INSTALLATION OF CABLE TELEVISION SYSTEMS SHALL NOT INTERFERE WITH THE CONSTRUCTION AND MAINTENANCE OF OTHER UTILITIES. IN THE EVENT A CABLE TELEVISION COMPANY DAMAGES THE FACILITIES OF A PUBLIC UTILITY, IT SHALL BE SOLELY RESPONSIBLE FOR THE DAMAGES. IF OTHERWISE APPROVED BY PALM BEACH COUNTY, NO BUILDINGS, STRUCTURES, IMPROVEMENTS, TREES, WALLS OR FENCES SHALL BE INSTALLED WITHIN THESE EASEMENTS WITHOUT THE PRIOR WRITTEN APPROVAL OF THE PALM BEACH COUNTY WATER UTILITIES DEPARTMENT, ITS SUCCESSORS AND ASSIGNS.
- ALL TRACTS FOR PRIVATE STREET PURPOSES, AS SHOWN HEREON ARE HEREBY SUBJECT TO AN OVERLAYING NON-EXCLUSIVE EASEMENT DEDICATED IN PERPETUITY TO THE PUBLIC FOR THE INSTALLATION, OPERATION, MAINTENANCE, REPAIR, EXPANSION AND REPLACEMENT OF UTILITIES, BOTH PUBLIC AND PRIVATE, INCLUDING, BUT NOT LIMITED TO, STORMWATER FACILITIES, POTABLE WATER PIPELINES, RAW WATER PIPELINES, WASTEWATER PIPELINES, RECLAIMED WATER PIPELINES, ELECTRIC POWER LINES, TELECOMMUNICATION LINES, CABLE TELEVISION LINES, GAS LINES, AND RELATED APPURTENANCES. THE INSTALLATION OF CABLE TELEVISION SYSTEMS SHALL NOT INTERFERE WITH THE CONSTRUCTION AND MAINTENANCE OF OTHER UTILITIES. IN THE EVENT A CABLE TELEVISION COMPANY DAMAGES THE FACILITIES OF A PUBLIC UTILITY, IT SHALL BE SOLELY RESPONSIBLE FOR THE DAMAGES. IF OTHERWISE APPROVED BY PALM BEACH COUNTY, NO BUILDINGS, STRUCTURES, IMPROVEMENTS, TREES, WALLS OR FENCES SHALL BE INSTALLED WITHIN THESE TRACTS WITHOUT THE PRIOR WRITTEN APPROVAL OF THE PALM BEACH COUNTY WATER UTILITIES DEPARTMENT, ITS SUCCESSORS AND ASSIGNS.
- THE DRAINAGE EASEMENTS, AS SHOWN HEREON, ARE HEREBY DEDICATED IN PERPETUITY FOR DRAINAGE PURPOSES. THE MAINTENANCE OF ALL DRAINAGE FACILITIES LOCATED THEREIN SHALL BE THE PERPETUAL MAINTENANCE OBLIGATION OF VALENCIA SOUND HOMEOWNERS ASSOCIATION, INC., ITS SUCCESSORS AND ASSIGNS, WITHOUT RECOURSE TO PALM BEACH COUNTY.

IN WITNESS WHEREOF, THE ABOVE NAMED LIMITED LIABILITY LIMITED PARTNERSHIP HAS CAUSED THESE PRESENTS TO BE SIGNED BY ITS GENERAL PARTNER, BOYNTON BEACH XXVI CORPORATION, A FLORIDA CORPORATION, LICENSED TO DO BUSINESS IN FLORIDA, THIS 29th DAY OF August 2019.

BOYNTON BEACH ASSOCIATES XXVI, L.L.P., A FLORIDA LIMITED LIABILITY LIMITED PARTNERSHIP
BY: BOYNTON BEACH XXVI CORPORATION, A FLORIDA CORPORATION, ITS GENERAL PARTNER

BY: Alan Fant, V.P.
ALAN FANT, VICE PRESIDENT

WITNESS: Sharon Lynn Webb WITNESS: Clayton Ratti
PRINT NAME: SHAROLYN WEBB PRINT NAME: Clayton Ratti

ACKNOWLEDGMENT

STATE OF FLORIDA
COUNTY OF BROWARD

BEFORE ME PERSONALLY APPEARED ALAN FANT, WHO IS PERSONALLY KNOWN TO ME OR HAS PRODUCED AS IDENTIFICATION, AND WHO EXECUTED THE FOREGOING INSTRUMENT AS VICE PRESIDENT OF BOYNTON BEACH XXVI CORPORATION, A FLORIDA CORPORATION, GENERAL PARTNER OF BOYNTON BEACH ASSOCIATES XXVI, L.L.P., A FLORIDA LIMITED LIABILITY LIMITED PARTNERSHIP AND SEVERALLY ACKNOWLEDGED TO AND BEFORE ME THAT HE EXECUTED SUCH INSTRUMENT AS SUCH OFFICER OF SAID CORPORATION, AND THAT THE SEAL AFFIXED TO THE FOREGOING INSTRUMENT IS THE CORPORATE SEAL OF SAID CORPORATION AND THAT IT WAS AFFIXED TO SAID INSTRUMENT BY DUE AND REGULAR CORPORATE AUTHORITY, AND THAT SAID INSTRUMENT IS THE FREE ACT AND DEED OF SAID CORPORATION.

WITNESS MY HAND AND OFFICIAL SEAL THIS 29th DAY OF August 2019.

NOTARY PUBLIC: Rebecca C. Medley
PRINT NAME: Rebecca C. Medley

MY COMMISSION EXPIRES: 5/14/2022 COMMISSION NUMBER: C-6192428

ACCEPTANCE OF RESERVATIONS

STATE OF FLORIDA
COUNTY OF PALM BEACH

VALENCIA SOUND HOMEOWNERS ASSOCIATION, INC., A FLORIDA NOT FOR PROFIT CORPORATION, HEREBY ACCEPTS THE DEDICATIONS AND RESERVATIONS TO SAID ASSOCIATION AS STATED AND SHOWN HEREON, AND HEREBY ACCEPTS ITS MAINTENANCE OBLIGATIONS FOR SAME AS STATED HEREON, DATED THIS 29th DAY OF August 2019.

VALENCIA SOUND HOMEOWNERS ASSOCIATION, INC.,
A FLORIDA NOT FOR PROFIT CORPORATION

BY: Sal DeJulio
PRINT NAME: Sal DeJulio PRESIDENT

WITNESS: Tracy Guinagh WITNESS: Keistic Swanson
PRINT NAME: Tracy Guinagh PRINT NAME: Keistic Swanson

ACKNOWLEDGMENT

STATE OF FLORIDA
COUNTY OF PALM BEACH

BEFORE ME PERSONALLY APPEARED Sal DeJulio, WHO IS PERSONALLY KNOWN TO ME OR HAS PRODUCED AS IDENTIFICATION, AND WHO EXECUTED THE FOREGOING INSTRUMENT AS PRESIDENT OF VALENCIA SOUND HOMEOWNERS ASSOCIATION, INC., A FLORIDA NOT FOR PROFIT CORPORATION AND SEVERALLY ACKNOWLEDGED TO AND BEFORE ME THAT HE EXECUTED SUCH INSTRUMENT AS SUCH OFFICER OF SAID CORPORATION AND THAT THE SEAL AFFIXED TO THE FOREGOING INSTRUMENT IS THE CORPORATE SEAL OF SAID CORPORATION AND THAT IT WAS AFFIXED TO SAID INSTRUMENT BY DUE AND REGULAR CORPORATE AUTHORITY, AND THAT SAID INSTRUMENT IS THE FREE ACT AND DEED OF SAID CORPORATION, WITNESS MY HAND AND OFFICIAL SEAL THIS 29th DAY OF August 2019.

NOTARY PUBLIC: Parale A. Duhany
PRINT NAME: Parale A. Duhany COMMISSION 06-079979
MY COMMISSION EXPIRES: 5/25/21 NUMBER

TITLE CERTIFICATION

STATE OF FLORIDA
COUNTY OF BROWARD

WE, FIDELITY NATIONAL TITLE INSURANCE COMPANY, A TITLE INSURANCE COMPANY, AS DULY AUTHORIZED TO DO BUSINESS IN THE STATE OF FLORIDA, DO HEREBY CERTIFY THAT WE HAVE EXAMINED THE TITLE TO THE HEREON DESCRIBED PROPERTY; THAT WE FIND THE TITLE TO THE PROPERTY IS VESTED IN BOYNTON BEACH ASSOCIATES XXVI, L.L.P., A FLORIDA LIMITED LIABILITY LIMITED PARTNERSHIP; THAT THE CURRENT TAXES HAVE BEEN PAID; AND THAT ALL PALM BEACH COUNTY SPECIAL ASSESSMENT ITEMS, AND ALL OTHER ITEMS HELD AGAINST SAID LANDS HAVE BEEN SATISFIED; THERE ARE NO MORTGAGES OF RECORD; AND THAT THERE ARE ENCUMBRANCES OF RECORD BUT THOSE ENCUMBRANCES DO NOT PROHIBIT THE CREATION OF THE SUBDIVISION DEPICTED BY THIS PLAT.

FIDELITY NATIONAL TITLE INSURANCE COMPANY

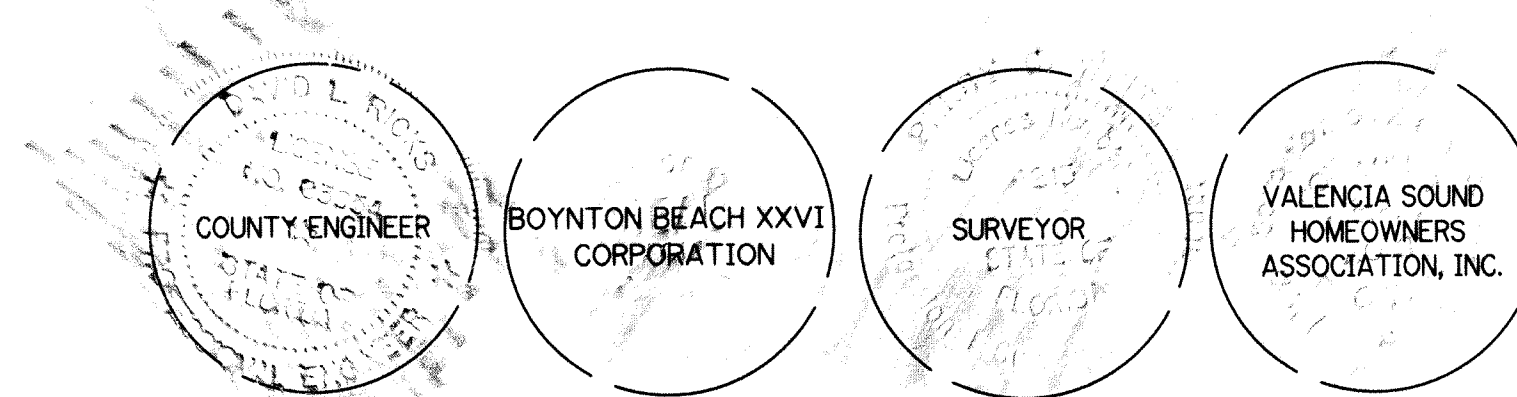
BY: George Tellez
GEORGE TELLEZ, VICE-PRESIDENT
DATE: June 16, 2019

COUNTY APPROVAL

THIS PLAT IS HEREBY APPROVED FOR RECORD PURSUANT TO PALM BEACH COUNTY ORDINANCE 95-33, AND IN ACCORDANCE WITH SECTION 177.07(2), FLORIDA STATUTES, THIS 29th DAY OF August 2019, AND HAS BEEN REVIEWED BY A PROFESSIONAL SURVEYOR & MAPPER EMPLOYED BY PALM BEACH COUNTY IN ACCORDANCE WITH SECTION 177.08(1) FLORIDA STATUTES.

BY: David L. Ricks
DAVID L. RICKS, P.E.
COUNTY ENGINEER

THIS INSTRUMENT WAS PREPARED BY
PERRY C. WHITE, P.S.M. 4213,
STATE OF FLORIDA
SAND & HILLS SURVEYING, INC.
8461 LAKE WORTH ROAD, SUITE 410
LAKE WORTH, FLORIDA 33467 LB-7741



SURVEYOR & MAPPER'S CERTIFICATE

THIS IS TO CERTIFY THAT THE PLAT SHOWN HEREON IS A TRUE AND CORRECT REPRESENTATION OF A SURVEY MADE UNDER MY RESPONSIBLE DIRECTION AND SUPERVISION; THAT SAID SURVEY IS ACCURATE TO THE BEST OF MY KNOWLEDGE AND BELIEF; THAT PERMANENT REFERENCE MONUMENTS ("P.R.M.'S") HAVE BEEN PLACED AS REQUIRED BY LAW AND THAT PERMANENT CONTROL POINTS ("C.P.'S") AND MONUMENTS ACCORDING TO SEC. 177.091 (9) F.S., WILL BE SET UNDER THE GUARANTEES POSTED WITH THE PALM BEACH COUNTY BOARD OF COUNTY COMMISSIONERS FOR THE REQUIRED IMPROVEMENTS; AND, FURTHER, THAT THE SURVEY DATA COMPLIES WITH ALL THE REQUIREMENTS OF CHAPTER 177, FLORIDA STATUTES, AS AMENDED, AND THE ORDINANCES OF PALM BEACH COUNTY, FLORIDA.

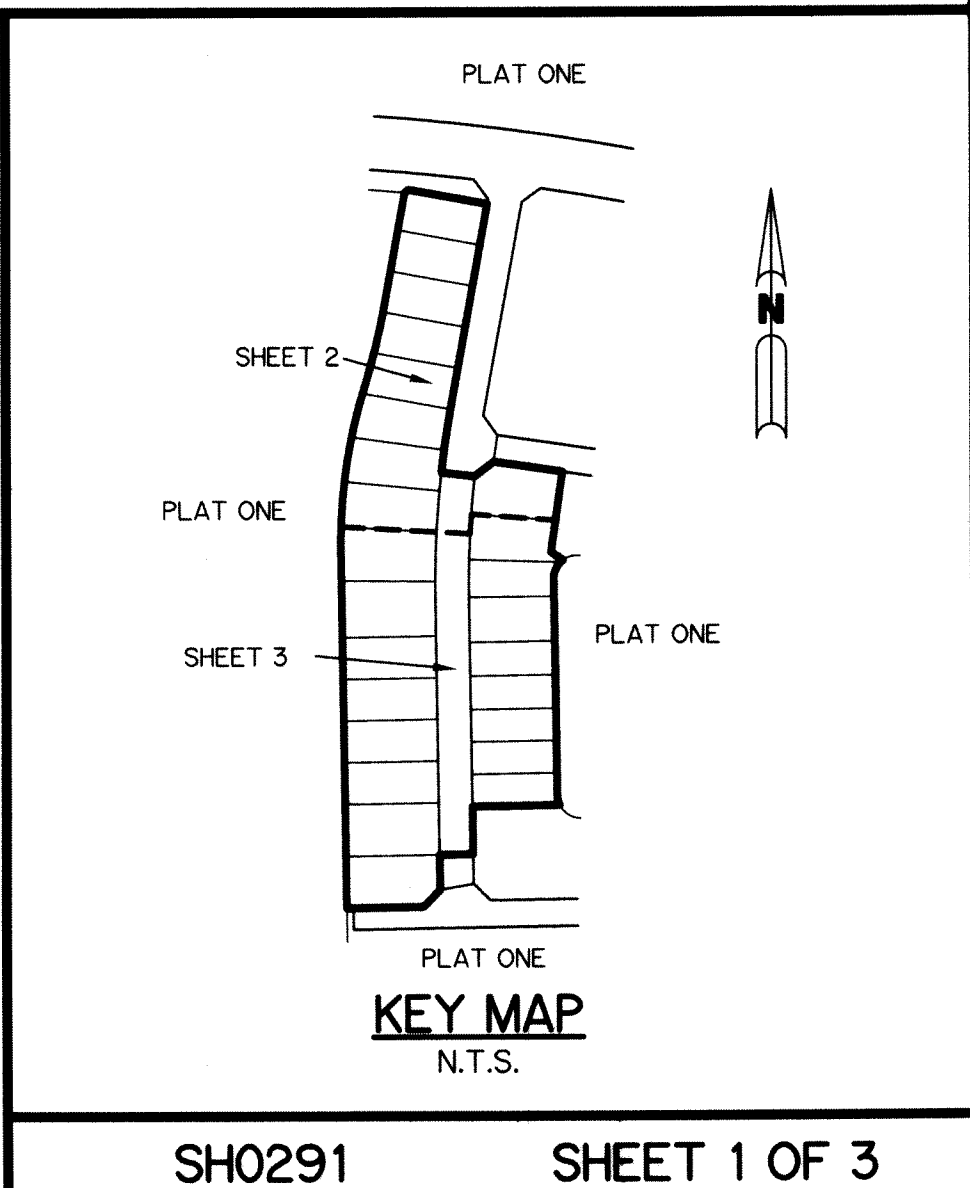
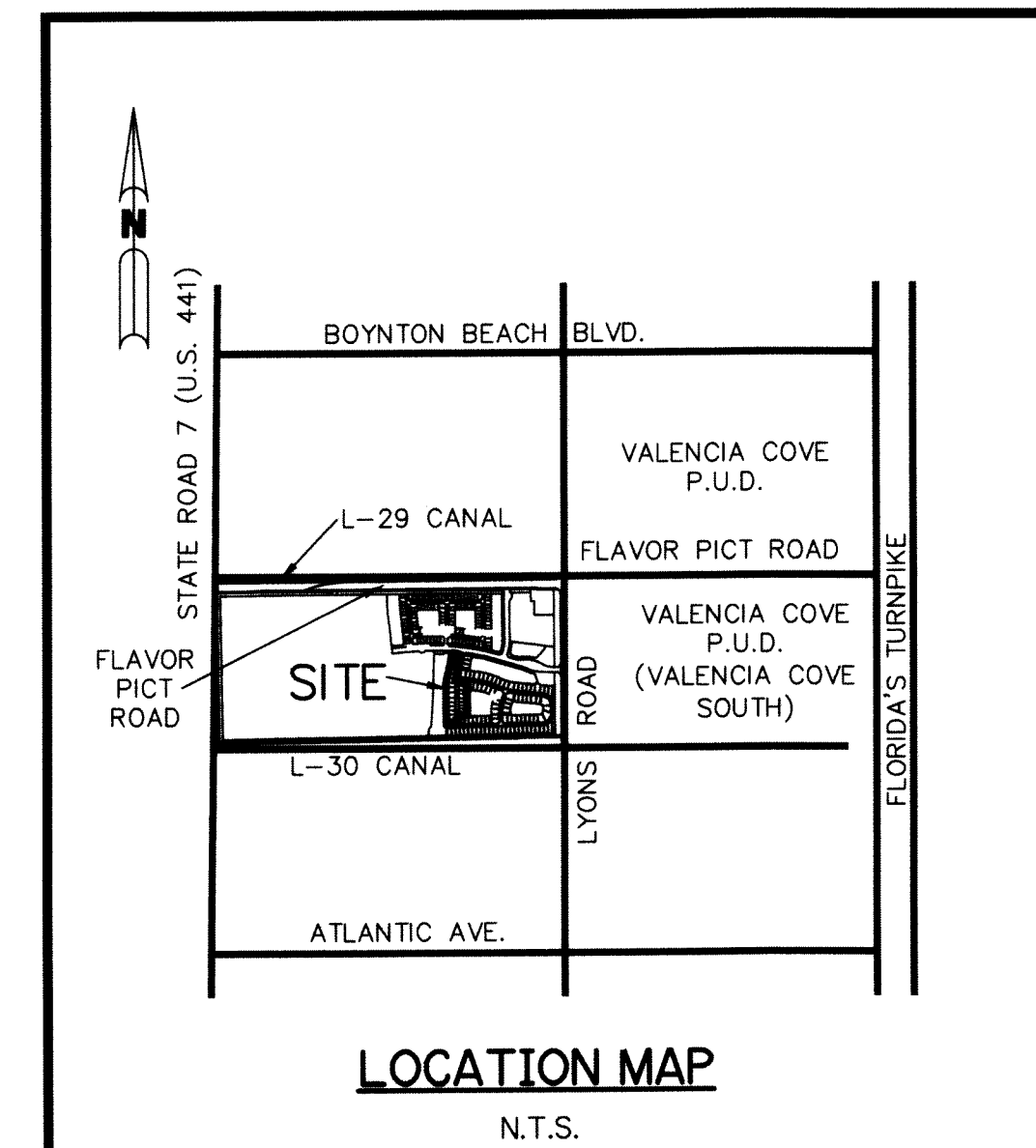
BY: Perry C. White DATE: 8/29/2019
PERRY C. WHITE
PROFESSIONAL SURVEYOR AND MAPPER
LICENSE NO. 4213, STATE OF FLORIDA

SURVEYOR'S NOTES:

- BEARINGS SHOWN HEREON ARE BASED ON THE STATE PLANE COORDINATE SYSTEM OF NAD 83, 1990 ADJUSTMENT. THE LINE BETWEEN PALM BEACH COUNTY HORIZONTAL CONTROL MONUMENTS STAMPED "VITALITY" AND "WHIT" HAVING A BEARING OF NORTH 01°02'54" WEST, ALL OTHER BEARINGS RELATIVE THERETO.
- NO BUILDING OR ANY KIND OF CONSTRUCTION OR TREES OR SHRUBS SHALL BE PLACED ON ANY EASEMENT WITHOUT WRITTEN CONSENT OF ALL EASEMENT BENEFICIARIES AND ALL APPLICABLE COUNTY APPROVALS OR PERMITS AS REQUIRED FOR SUCH ENCROACHMENTS. THERE SHALL BE NO ABOVE GROUND ENCROACHMENTS WHERE UTILITY EASEMENTS AND LAKE MAINTENANCE EASEMENTS OR WATER MANAGEMENT TRACTS COINCIDE.
- ALL LINES INTERSECTING CIRCULAR CURVES ARE RADIAL UNLESS OTHERWISE NOTED.
- NOTICE: THIS PLAT, AS RECORDED IN ITS GRAPHIC FORM, IS THE OFFICIAL DEPICTION OF THE SUBDIVIDED LANDS DESCRIBED HEREIN AND WILL IN NO CIRCUMSTANCES BE SUPPLANTED IN AUTHORITY BY ANY OTHER GRAPHIC OR DIGITAL FORM OF THE PLAT. THERE MAY BE ADDITIONAL RESTRICTIONS THAT ARE NOT RECORDED ON THIS PLAT THAT MAY BE FOUND IN THE PUBLIC RECORDS OF PALM BEACH COUNTY.
- IN THOSE CASES WHERE EASEMENTS OF DIFFERENT TYPES CROSS OR OTHERWISE COINCIDE, DRAINAGE EASEMENTS SHALL HAVE FIRST PRIORITY, UTILITY EASEMENTS SHALL HAVE SECOND PRIORITY, ACCESS EASEMENTS SHALL HAVE THIRD PRIORITY, AND ALL OTHER EASEMENTS SHALL BE SUBORDINATE TO THESE WITH THEIR PRIORITIES BEING DETERMINED BY USE RIGHTS GRANTED.
- COORDINATES SHOWN ARE GRID COORDINATES DATUM = NAD 93 (1990 ADJUSTMENT). ZONE = FLORIDA EAST ZONE. LINEAR UNIT = U.S. SURVEY FEET. COORDINATE SYSTEM = 1983 STATE PLANE TRANSVERSE MERCATOR PROJECTION. ALL DISTANCES ARE GROUND (UNLESS OTHERWISE NOTED). SCALE FACTOR = 1.00002026. PLAT BEARING = GRID BEARING. GROUND DISTANCE X SCALE FACTOR = GRID DISTANCE.
- BUILDING SETBACK LINES SHALL BE AS REQUIRED BY CURRENT PALM BEACH COUNTY ZONING REGULATIONS.

SITE PLAN DATA

MONTICELLO AGR - PUD PLAT TWO
CONTROL NO. 2005-014



SH0291 SHEET 1 OF 3